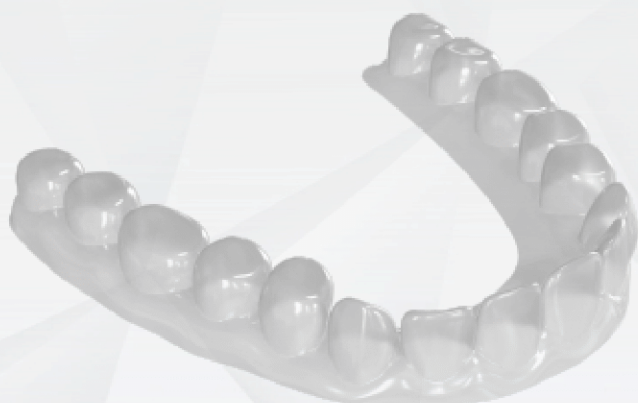




DENTAL MOLDING PLATES IN EVA!

Dental molding plates made of EVA are recommended for creating splints, molds, or orthodontic braces for the teeth.

They are useful in dental whitening procedures, bruxism control, and as mouthguards or splints for dental treatments.



They are produced in round and square versions, in three thicknesses:

1mm, 2mm e 3mm.



MAIN DIMENSIONS

Round	Square
Ø 133mmx 1mm	135mmx 135mmx1mm
Ø 133mmx 2mm	135mmx135mmx2mm
Ø 133mmx 3mm	135mmx 135mmx3mm